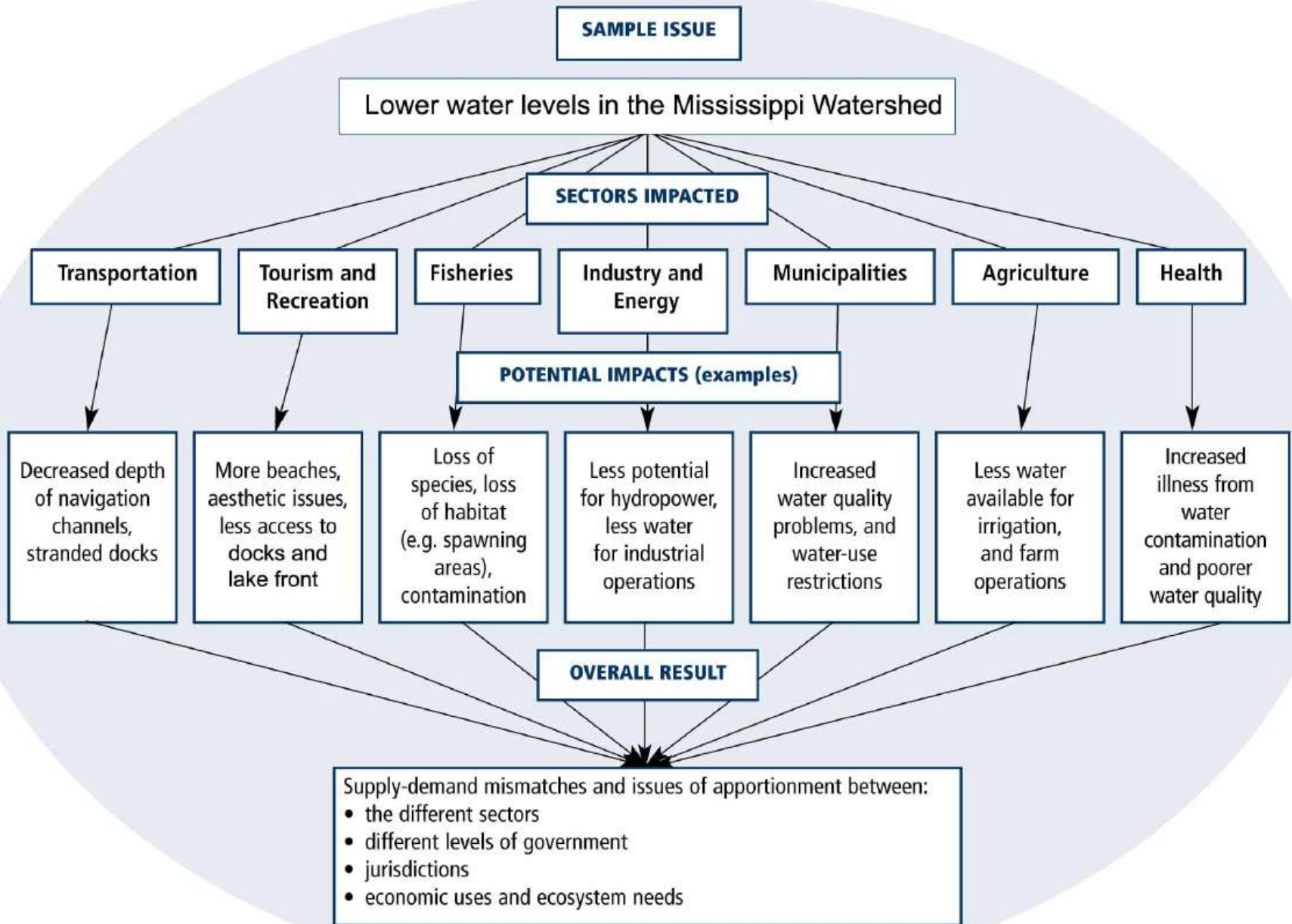
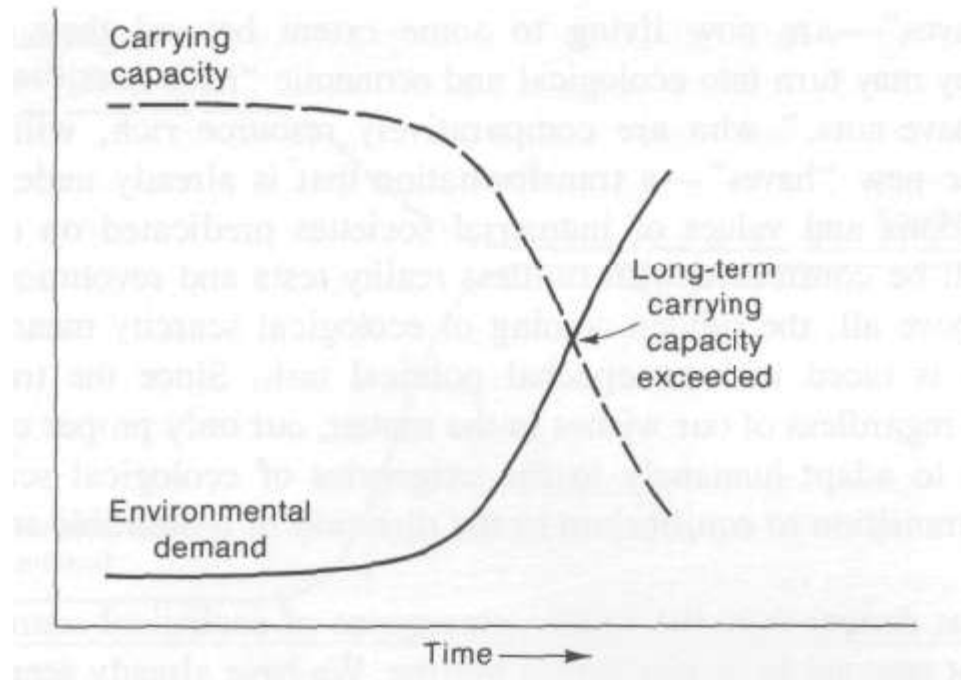


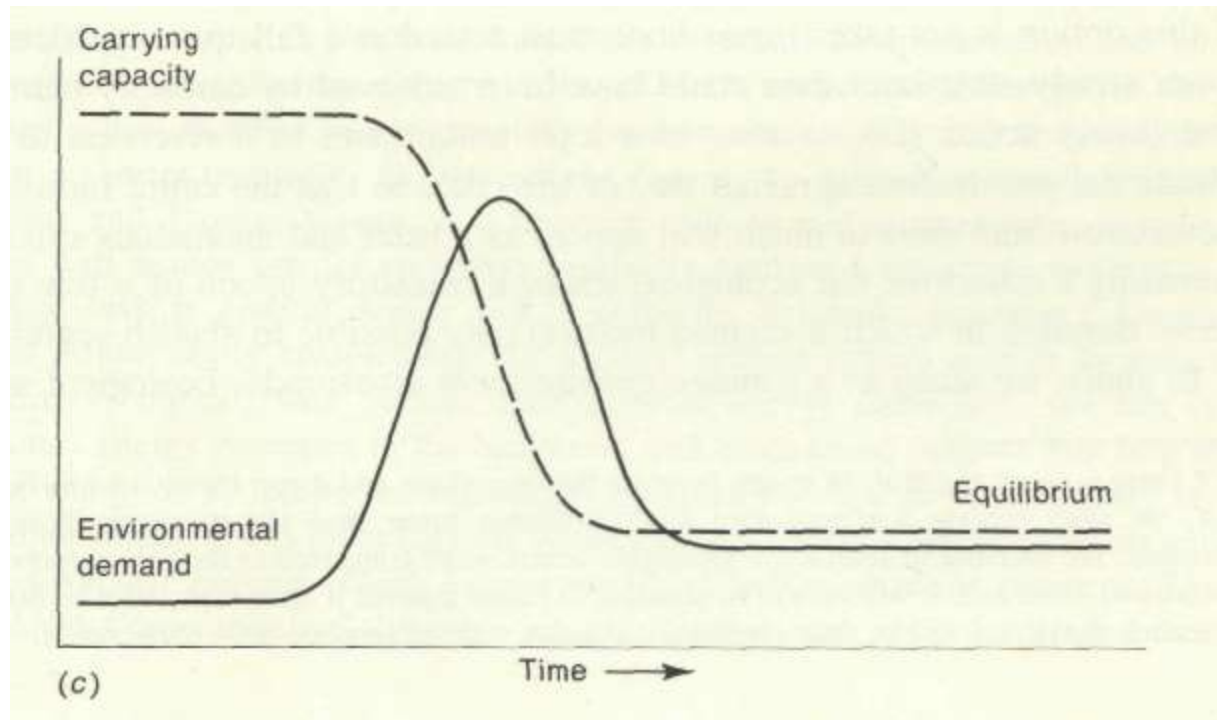
# Water resources is a crosscutting issue



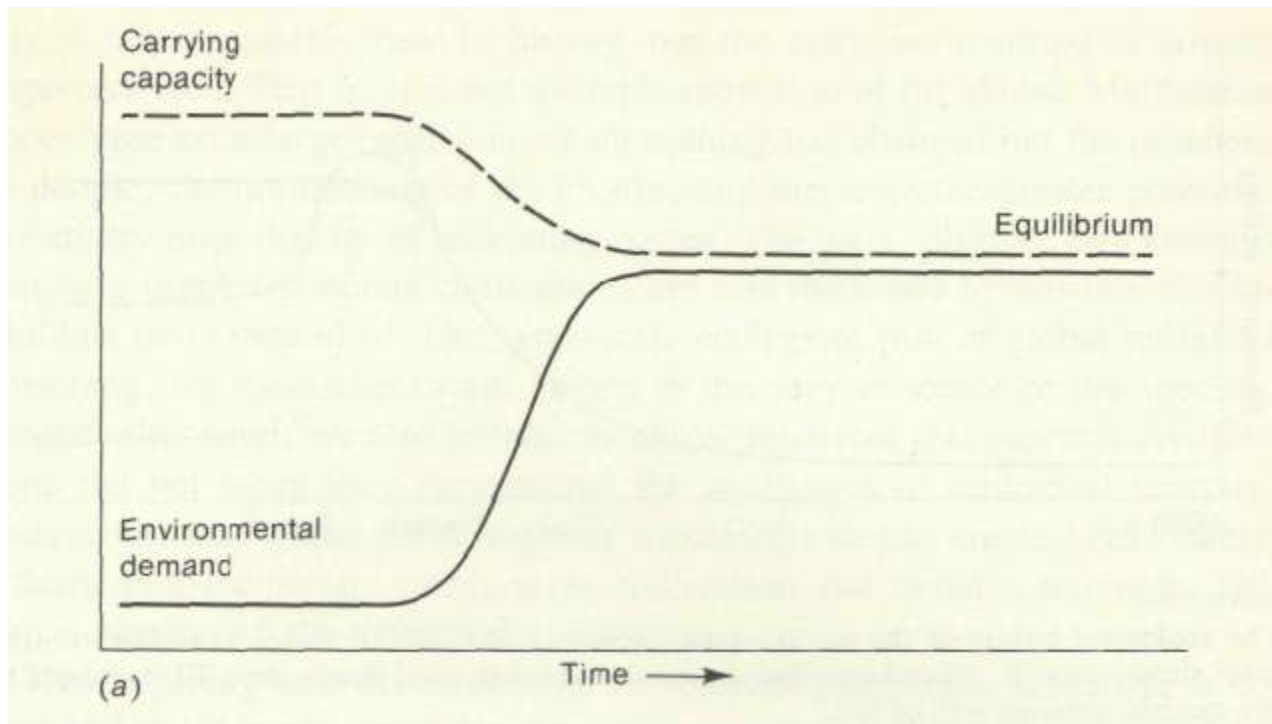
# Water supply and demand Converge



# Without adaptation



# With adaptation



# Possible actions to increase supply

- Develop new water management strategies
- Build new flow control structures (store water)
- Maximize water yield from forested areas
  - Awareness issues, foresters, land owners
- Agricultural practices – *encourage farm ponds ?*
- Better define key capacity needs (analysis & research with partner agencies), so as not to oversupply water to any one sector

# How to stabilize demand at lower levels ?

- Raise awareness of climate change and water supply limitations ( Revised Watershed Management Plan)
- Promote water conservation
- Promote development of *appropriate* business plans
- Develop clear understanding of how water demands for each sector will change with climate
- Establish clearly defined and widely accepted priorities for water use in the watershed

# Mississippi Watershed

***Must expand our planning to incorporate climate change***

**The new paradigm:** Not only is demand for water increasing in MV because of land use and population changes but the flow regime (hydrograph) is changing. Most importantly, water supply is dropping during the summer months due to climate change. There are already competing demands for limited water supplies and this competition will increase with future Climate Change.

## **Our Vision:**

- A smooth transition and balance between water supply and demand as Mississippi Watershed responds to climate change and summer flows drop
- Clear agreement on water management priorities in the watershed
- Co-ordinated effort between local agencies and other levels of government to meet the expectations of the public

## **Mission:**

Provide leadership and a level of co-ordination as various agencies that have responsibilities in our watershed engage in adaptation